

Priced Right Homes Building Communities Powered By 100% Renewable Energy

Delivering Smart Solutions, Modern Architecture and Clean Energy

Producing Fast, Cost-Effective and Sustainable Housing

Creating A Better Lifestyle for People

FAST FIX ARCHITECTURAL BUILDING SYSTEMS PTY LTD

ACN: 602 090 728

AS TRUSTEE FOR NATIONAL INNOVATIVE BUILDING PRODUCTS UNIT TRUST

ABN : 39 847 799 892

TRADING AS

PRICED RIGHT HOMES MELBOURNE

LEVEL 8 220 COLLINS STREET MELBOURNE

20 FALLS ROAD MARYSVILLE VICTORIA



INNOVATIVE ENERGY SAVING SHOW CASE HOME AND CENTRE

EXHIBITING



* ResCom Fire Wall Board - External Cladding - Compliant up to BAL- FZ FLAME ZONE



*NDIS Approved - Specialist Disability Accommodation - Internal Robust Wall Board

* Off – Grid Reliability - 100% Renewable Energy



* Solar Power and Battery Storage System

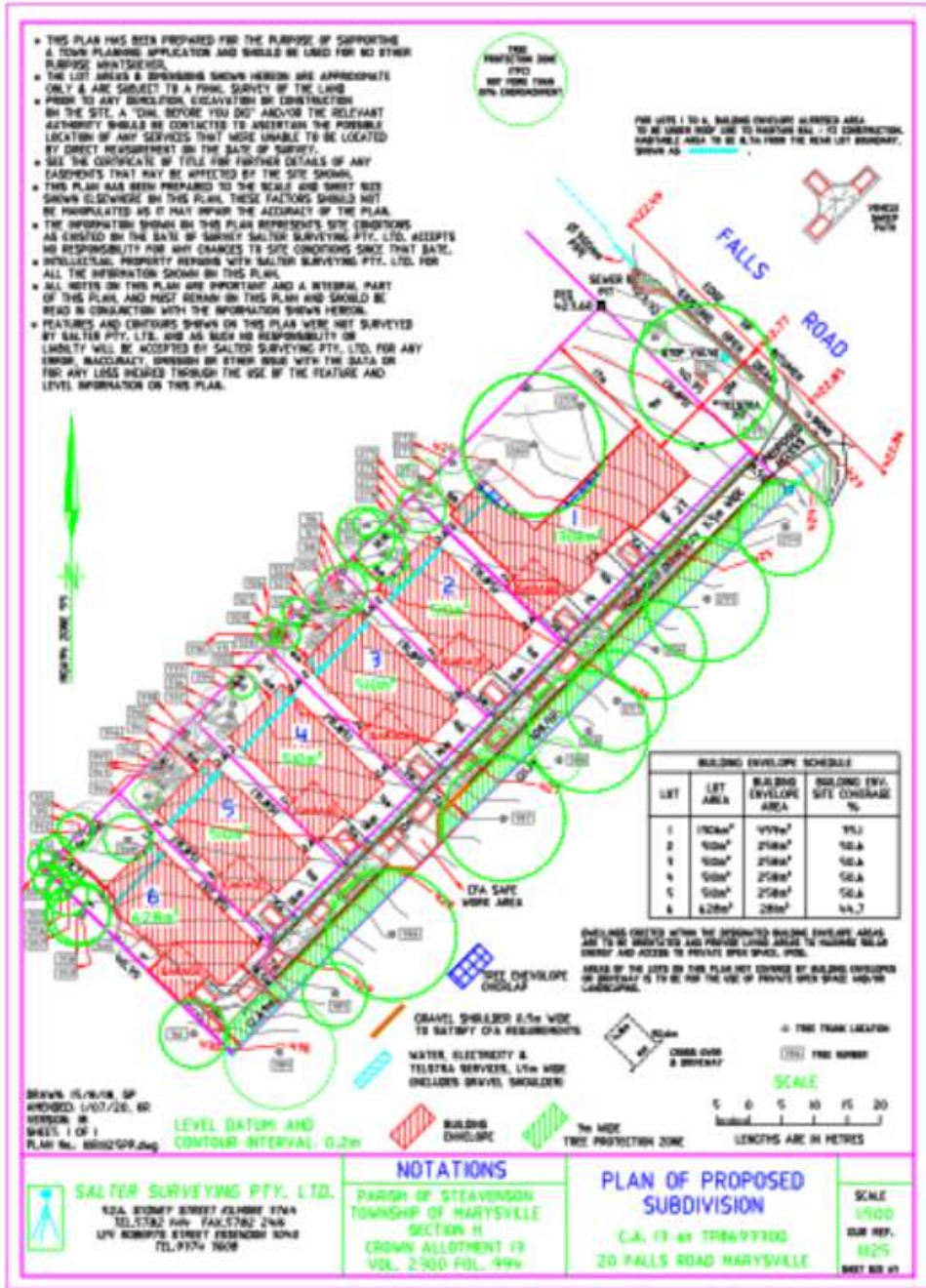


* Electric Vehicle Charge Point

* MCG Aluminum Powder Coated Double Glazed Low – e 100 mm Signiture Series Window



MARYSVILLE MASTER PLAN FOR AFFORDABLE TURN KEY ENERGY SAVING HOMES



PRICED RIGHT HOMES MELBOURNE *LOGIC *PURPOSE *STRUCTURE *FORM *PROCESS SYSTEM

BUILDING COMMUNITIES DELIVERING SMART SOLUTIONS TO CREATE A BETTER LIFESTYLE FOR PEOPLE

As a company we care about the environment.

By using the latest in sustainable building products, cost efficient green design principles and clever siting we can ensure a reduction in carbon footprint and save energy and water. We are about Eco Friendly Designs & Quality Sustainable Building Materials.

Our building model is based on the works of Frank Lloyd Wright an American architect who believed in designing structures that were in harmony with humanity and its environment, a philosophy he called organic architecture.

This philosophy conceived a new type of dwelling that came to be known as the Usonian House, his unique vision for urban planning in the United States.

Our houses feature new approaches to construction and set a new style for design and economize construction costs.

The Building System we have developed is a cost efficient affordable housing model utilizing products creating many efficiencies in the construction thus creating affordable homes.

The eastern regional Victorian market being the Healesville, Yarra Glen, Marysville, Buxton, Alexandra, Eildon & Mansfield corridor has been widely ignored which presents an opportunity to deliver affordable house & land turn key packages, especially to First Home Buyers.

The company will also implement its Build to Rent Model creating Turn Key properties some of which will be fully appointed with a furniture package and inventory prepared for holiday and residential occupation, managed by Marysville Apartment Hotels our management subsidiary.



MASTER PLAN LANDSCAPE FEATURES



Container Gardens



Urn Gardens



Low Maintenance Grounds



Vertical Garden Fences

PRH CORPORATE SOCIAL RESPONSIBILITY



Socially Responsible Investing:
An investment strategy that seeks to consider both financial returns AND social good.



PRH CORPORATE SOCIAL RESPONSIBILITY CONTRIBUTION: FIRST HOME BUYERS BONUS GRANT ADDING TO THE GOVERNMENT NEW HOME FIRST HOME BUYERS GRANT

This corporate grant will be available to eligible first home buyers in addition to the Federal Government’s Super Saver Scheme, the Victorian Government’s First Home Owner Grant (New Homes) scheme and Stamp Duty concessions for new homes.

First home buyers who purchase an eligible residence will receive a one-off payment provided by Priced Right Homes Melbourne, matching the potential savings a buyer can achieve over a 12-month period under the Federal Government’s First Home Super Saver Scheme.

The amount of \$15,000 will be paid directly to eligible first home buyers on settlement and with our housing package under \$600,000 and an initial deposit of just 5 percent required, we hope our affordability initiative will break down a few barriers for first home buyers.

Looking to buy your first home, salary sacrificing into super can be a great option

Click on this link:

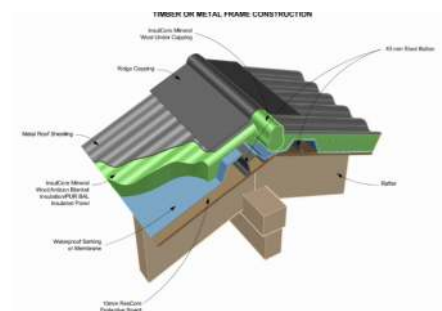
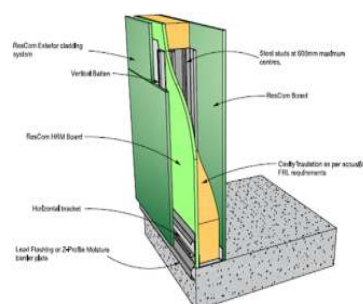
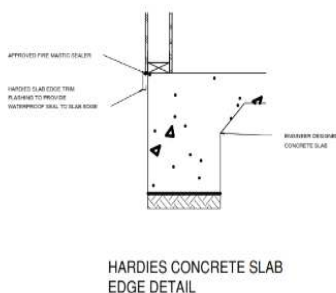
https://www.abc.net.au/life/what-salary-packaging-is-and-how-it-works/10830070?utm_source=sfmc&utm_medium=email&utm_content=&utm_campaign=%5bnews_sfmc_newsma il_am_df !n1%5d%3a8935&user_id=1ab98286ba422aa3aef0eb851f4625baa278a6187bd06756b947efe0548050c6&WT.tsrc=email&WT.mc_id=Email%7c%5bnews_sfmc_newsma il_am_df !n1%5d%7c8935ABCNewsma il_features_arti clelink

FIRST HOME BUYERS "TURN KEY" HOUSE & LAND PACKAGE MARYSVILLE - REGIONAL VICTORIA		
FINANCIAL MODEL - SUPER SAVER SCHEME & SMSF		\$
Purchase Price inclusive of carpets & landscaping		575,000
Less		
*Purchasers 5 % Cash Deposit Funds	29,000	
*Regional First Home Buyers Grant	20,000	
*First Home Super Saver Scheme OR SMSF Contribution	15,000	
*Developer Grant	15,000	
Total Deposit	79,000	79,000
Balance Required To Settle Purchase		496,000
Less Bank Home Loan LVR 85%		496,000
Balance Required To Settle Purchase		NIL



BAL – FZ Building System Eliminating Exposure to Flames, Ember Attack & Radiant Heat

- Foundation - Concrete Slab including Garage, Front Entrance , Alfresco and all Steps
- Timber or Steel Frame 90 x 35 or BMT 1.15
- Timber or Steel Frame Roof Trusses
- Aluminium Colourbond Double Glazed Low - e Windows (Semi Commercial Frame Profile)
- Colourbond Metal Fascia and Spout
- Roof Trusses Clad with ResCom Fire Wall Mgo board
- Roof Sisalation - Fire Rated with air gap sealed installation
- Colourbond corrugated iron Roofing
- Ceiling Insulation – 27 Kg Rock Wool
- Wall Sisalation - Fire Rated with air gap sealed installation
- Wall Insulation - 27 Kg Rock Wool
- Hardies Slab edge beam flashing
- Exterior Walls - 10 mm ResCom Fire Wall Board – 2700 mm x 1200 mm - FRL 90/90/90
- Interior Walls - 10 mm ResCom Fire Wall board
- Window & Door Reveals - 10 mm ResCom Fire Wall Board
- Garage Internal Walls & Ceiling -10mm ResCom Fire Wall Board
- Alfresco Ceiling ,Front Eaves & Porch - 10 mm ResCom Fire Wall Board
- Alfresco Posts - Steel 90x90 sq. set into slab rebate -powder coated to match windows
- Garage Door - Tilt Panel clad with 10 mm ResCom Fire Wall Board
- Window Screens - Metal Frame & Stainless-Steel Mesh
- Bush Fire Roller Shutters
- Front Porch -Steel Mesh Screen Door
- 10,000 Litre Slimline Water tank with CFA outlet
- Roof and Solar Panel Protection - Integrated Sprinkler Water System





A New Generation of Robust Designed Non-Combustible External Cladding & Internal Wall Lining

The board is environmentally friendly nontoxic magnesium oxide composite and has strength and fire resistance due to the very strong bonds between the Magnesium (Mg) and Oxygen (O) atoms that form Magnesium Oxide (Chemical Symbol MgO)

It is Impact Resistant, Fire Rated, Highly Water Resistant & Mould Resistant.

Its robust durable surface will accept most types of decorative finishing, including render , paint and texture compound

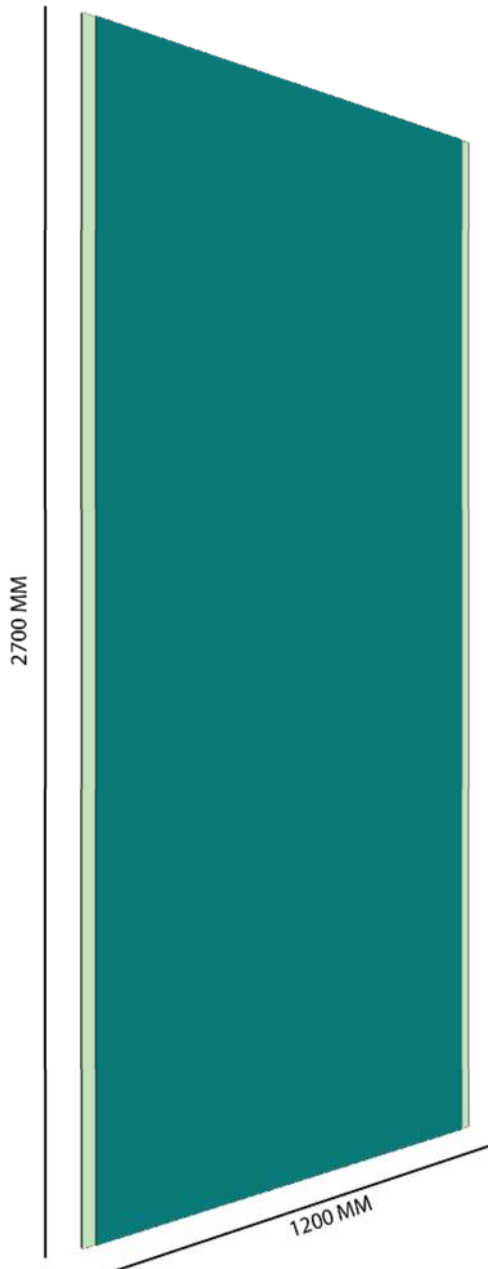
STORAGE AND HANDLING:

All materials must be kept dry, preferably by being stored inside the building.

Care should be taken to avoid sagging or damage to edges, ends and surfaces.

All ResCom® Board should be stacked flat, properly supported on a level platform or on support members which extend the full width of the sheets and which are spaced at maximum 600mm centres.

If stored outside, sheets are to be stored off the ground, stacked as previous details and protected from the weather.



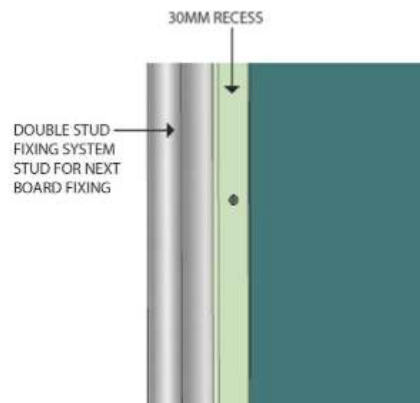
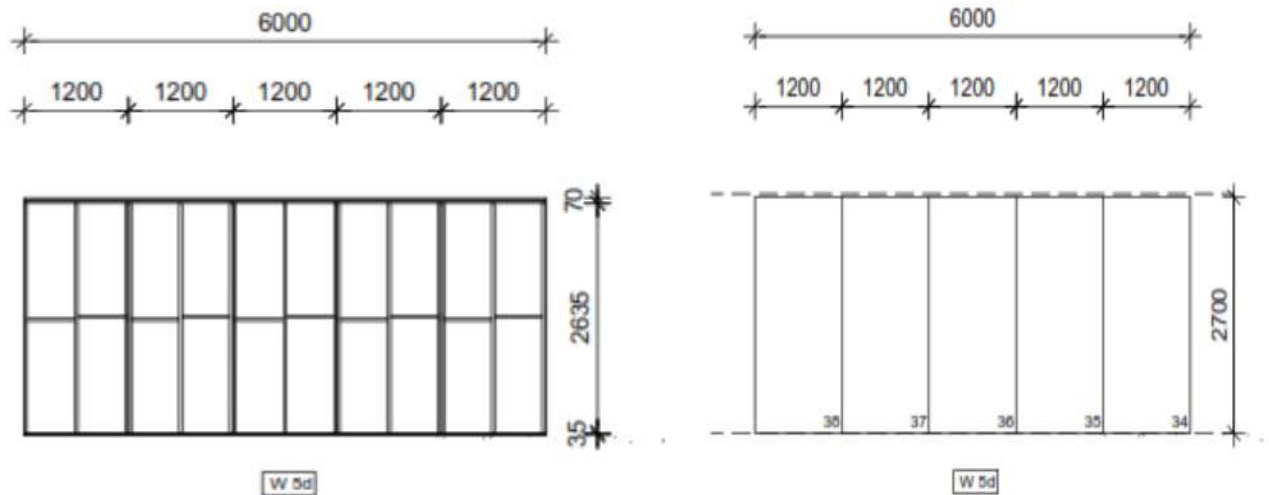
Double Stud Wall System

Fix 10 mm MgO Board using the Double Stud Wall System

A Pre-Fabricated Wall Framing System Delivering Sheet Layout for Fixing Board at Junctions

* Double Studs at 1200 mm intervals

* Interim Studs at 600 mm centres



Installation Method

1. Vertical Fix 2700 mm x 1200 mm board to frame using Non-Corrosive Class 5, 8 Gauge, 40 mm Self Drilling Countersunk Screws.

Double stud system allows direct fixing to stud with 1200 mm wide boards

Quick Drive Auto Feed Screw Driving System is recommended

<https://www.strongtie.com/products/go/fasteners/quik-drive>



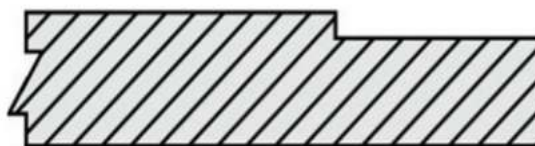
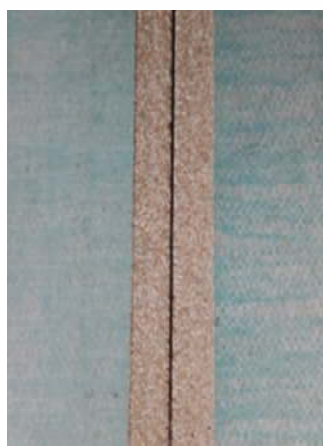
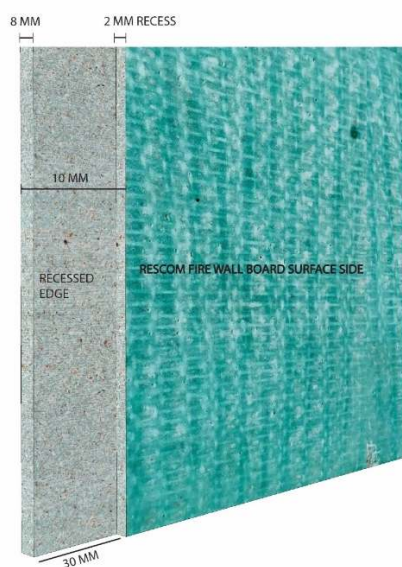
DRYWALL

Cement Board and Fiber-Cement Board Underlayment/Backerboard to Wood or Steel



2. Fix screws at 300 mm centres and 15 mm from edge of board.
3. Ensure screws finish 0.5 mm below the surface of the board
4. All External Cladding exposed edges & joints to be caulked with fire rated sealant BAL – FZ FRL 60/60/60
5. Internal Lining joints & screw holes filled & finished with plaster jointing compound as per manufacturer's specifications, using a perforated paper/ fabric tape on the boards recessed edges to achieve clean joints
6. Recessed edges on the board allow for taping and clean joints

2.



ResCom® Board Recessed Edge

- 1.5mm recess on the long face side allows joint reinforcement
- Provides a smooth even and continuous surface once jointed.

7. Apply a high viscosity sealing primer coat to External Wall Cladding before Render or Texture Coat Finish
8. Internal Finish with 2 coat paint system as per manufacturers specifications or if requiring a level 4 or 5 finish - coating must comply with industry standards or as detailed in the ResCom Installation Manual

CLICK ON INSTALLATION MANUAL

<https://rescombp.com/wp-content/uploads/2018/11/ResCom-BP-International-Technical-Installation-Manual.pdf>